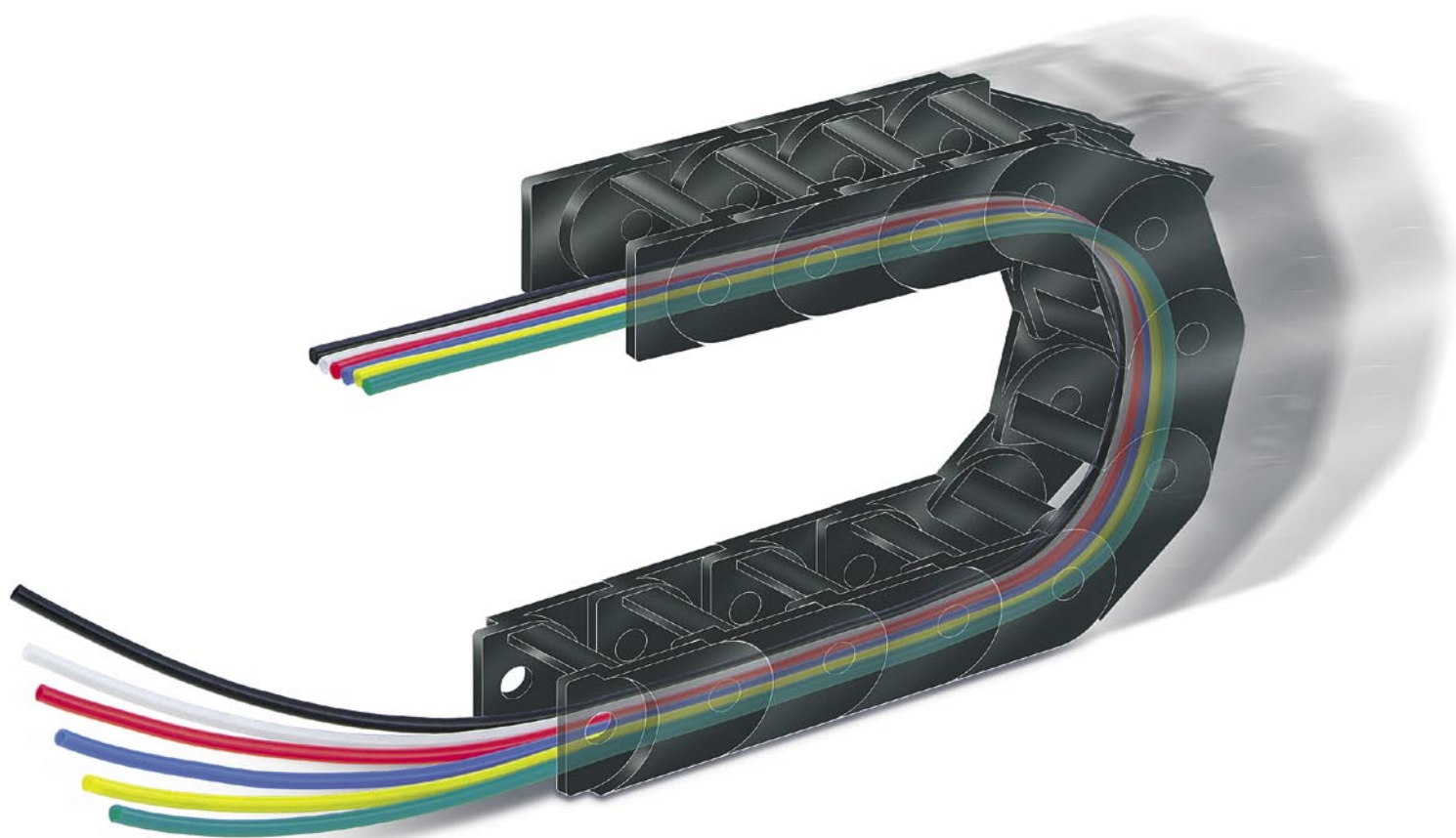


Wear Resistant Tubing

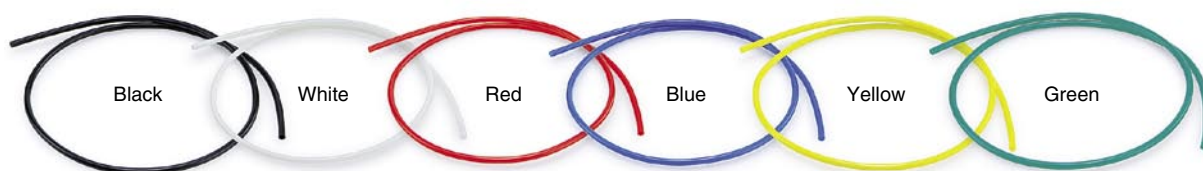
Abrasion: Approx. $\frac{1}{3}$
 (Compared with SMC polyurethane tubing TU series)

Description	Maximum abrasion (mm) After 10 million cycles
Wear resistant tubing TUZ series	0.16
Polyurethane tubing TU series	0.46

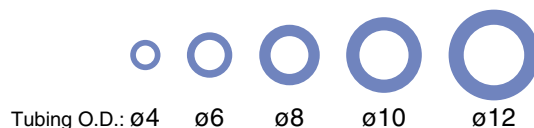
Note) Comparison based on the SMC's specific testing condition



6-colour variations



5-size variations



Series TUZ



CAT.EUS50-30A-UK

Wear Resistant Tubing Series *TUZ*



Model

Model	TUZ0425	TUZ0604	TUZ0805	TUZ1065	TUZ1208
Tubing O.D. (mm)	4	6	8	10	12
Tubing I.D. (mm)	2.5	4	5	6.5	8

● — 20 m roll □ — 100 m roll

Black (B)	●	●	●	●	●
White (W)	●	●	●	●	●
Red (R)	●	●	●	●	●
Blue (BU)	●	●	●	●	●
Yellow (Y)	●	●	●	●	●
Green (G)	●	●	●	●	●

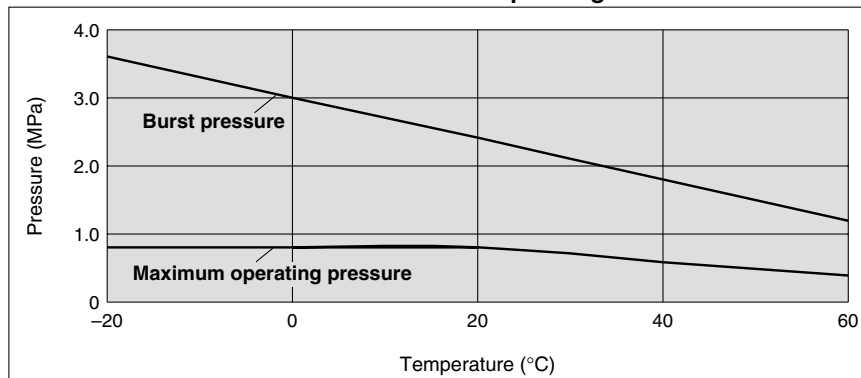
Specifications

Fluid		Air				
Applicable fittings		One-touch fittings KQ/KJ series, Insert fittings KF series, Stainless steel 316 insert fittings KFG series, Miniature fittings M/MS series (hose nipple type)				
Max. operating pressure	20°C	0.8 MPa				
	60°C	0.4 MPa				
Burst pressure		Refer to the burst pressure characteristics curve.				
Min. bending radius (mm)		10	15	20	27	35
Operating temperature		-20 to +60°C				
Material		Special polyurethane				

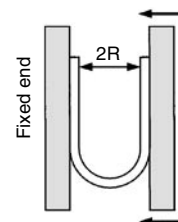
Note 1) The minimum bending radius means the value measured by the method shown in the figure at the right at the temperature of 20°C when the tube is bent. The minimum bending radius assumes static piping. If the tube is used in a moving part, provide extra length to the tube. Check the bending radius recommended by the flexible protection tube manufacturer to assure that the tube is used in the flexible protection tube.

Note 2) Not clear, but opaque due to material.

Burst Pressure Characteristics Curve and Operating Pressure



How to Calculate Minimum Bending Radius



Bend the tube into U-form at the temperature of 20°C. Fix one end and close loop gradually. Measure 2R when the tube breaks or is crushed.

How to Order

TUZ0425 BU - 20

Tubing model

Model	O.D. x I.D. (mm)
TUZ0425	4 x 2.5
TUZ0604	6 x 4
TUZ0805	8 x 5
TUZ1065	10 x 6.5
TUZ1208	12 x 8

Colour

Symbol	Colour
B	Black
W	White
R	Red
BU	Blue
Y	Yellow
G	Green

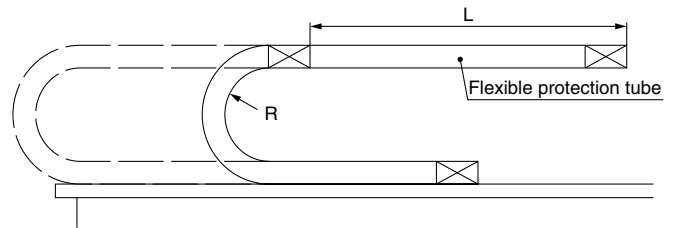
Length per roll

Symbol	Length
20	20 m roll
100	100 m roll

Reference Data: Abrasion due to Flexible Protection Tube

Test Conditions

Test tube	TUZ0604, TU0604
Quantity of tube tested	5 pcs. for each
Operating speed	1500 mm/sec
Operating frequency	90 c.p.m
Stroke L	500 mm
Bending radius R	28 mm
Material of flexible protection tube	Special engineering plastic
Tube tie	Not used



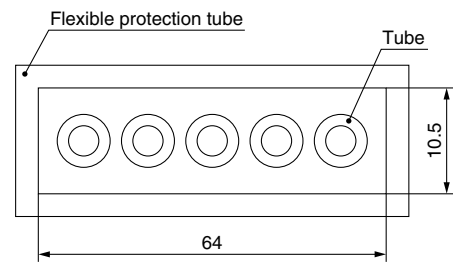
Test Results

Model	Maximum abrasion after 10 million cycles (mm)
TUZ0604	0.16
TU0604	0.46

As this test was an acceleration test, the tube bending radius was out of the flexible protection tube manufacturer's allowable range.

When the flexible protection tube is used in the actual application, check the manufacturer's catalogue specifications.

The values in the table above are representative values, and not guaranteed.



Tube dimensions inside the flexible protection tube

Made to Order TFU-X73

Flat type of the TUZ series

The identification line is not shown. Colour combinations are also available.

Please contact SMC for detailed specifications, dimensions, and delivery.

How to Order

TFU0425 BU - 2 - 10 - X73

Colour

Symbol	Colour
B	Black
W	White
R	Red
BU	Blue
Y	Yellow
G	Green

Special polyurethane

Length per roll

Number of cores

Tubing model

Model	O.D. x I.D. (mm)
TFU0425	4 x 2.5
TFU0604	6 x 4
TFU0805	8 x 5
TFU1065	10 x 6.5
TFU1208	12 x 8